

# By the Sea

ANDOVER FABRICS



Low Tide Quilt  
designed by:

**Janet Houts**

Quilt Size: **60" x 72"**

[andoverfabrics.com](http://andoverfabrics.com)

## About By the Sea

Inspired by seaside pools left by the receding tide, By the Sea features fish, sea turtles, and more. Whether creating a quilt for your summer cottage or a bag to bring for your beach essentials, this collection is perfect for all things beach-inspired.

andover



[makower.uk](http://makower.uk)

Free Pattern Download Available

1384 Broadway New York, NY 10018  
Tel. (800) 223-5678 • [andoverfabrics.com](http://andoverfabrics.com)

# Low Tide Quilt



Introducing Andover Fabrics new collection: **BY THE SEA** by Andover Fabrics

Quilt designed by Janet Houts

Quilt finishes 60" x 72"

*This pattern, variously known as Clamshell, Seashell, Fish Scale, and Sugar Scoop, was first printed in a late 1800s Ladies Art Company catalog under the name Shell Chain. The over-sized patches in this version are a showcase for the charming sea-related novelty prints. This is the perfect pattern for quilters who enjoy the time-honored method of hand stitching.*

## Fabric Requirements

Fabric A	blocks, binding	Yardage	Fabric
<b>23 Prints</b>	blocks	1 yard	9272-B
		1/2 yard each	
9266-B	9266-L	9266-N	9267-B
9267-N	9267-T	*9268-L	9268-N
9268-T	9269-B	9269-L	9269-N
9269-TB	9270-B	9270-C	9270-CN
9270-L	9270-T	9171-N	9171-T
9171-TB	9272-C	9272-T	
<b>Backing</b>		4 yards	*9268-L

## Cutting Directions

**Note:** Read assembly directions before cutting patches. WOF designates the width of fabric from selvage to selvage (approximately 42" wide).

### Fabric A

Cut (7) strips 2 1/2" x WOF for binding

Cut (2-3) clamshells

### 23 Prints

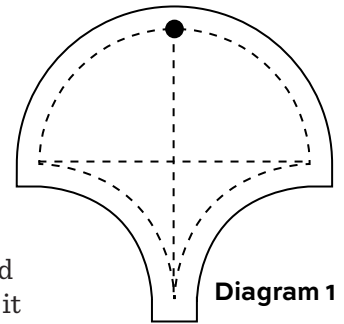
From each:  
Cut (2-3) clamshells (read Steps 1-3 before cutting)

### Backing

Cut (2) panels 40" x 68", pieced to fit quilt top with overlap on all sides

## Making the Quilt

1. Print out the template pattern two times on your printer (be sure it prints at 100%). Cut out one Template 1 and one Template 2, leaving an extra 1/2" outside the dashed lines. This extra will make it easier to tape templates together.



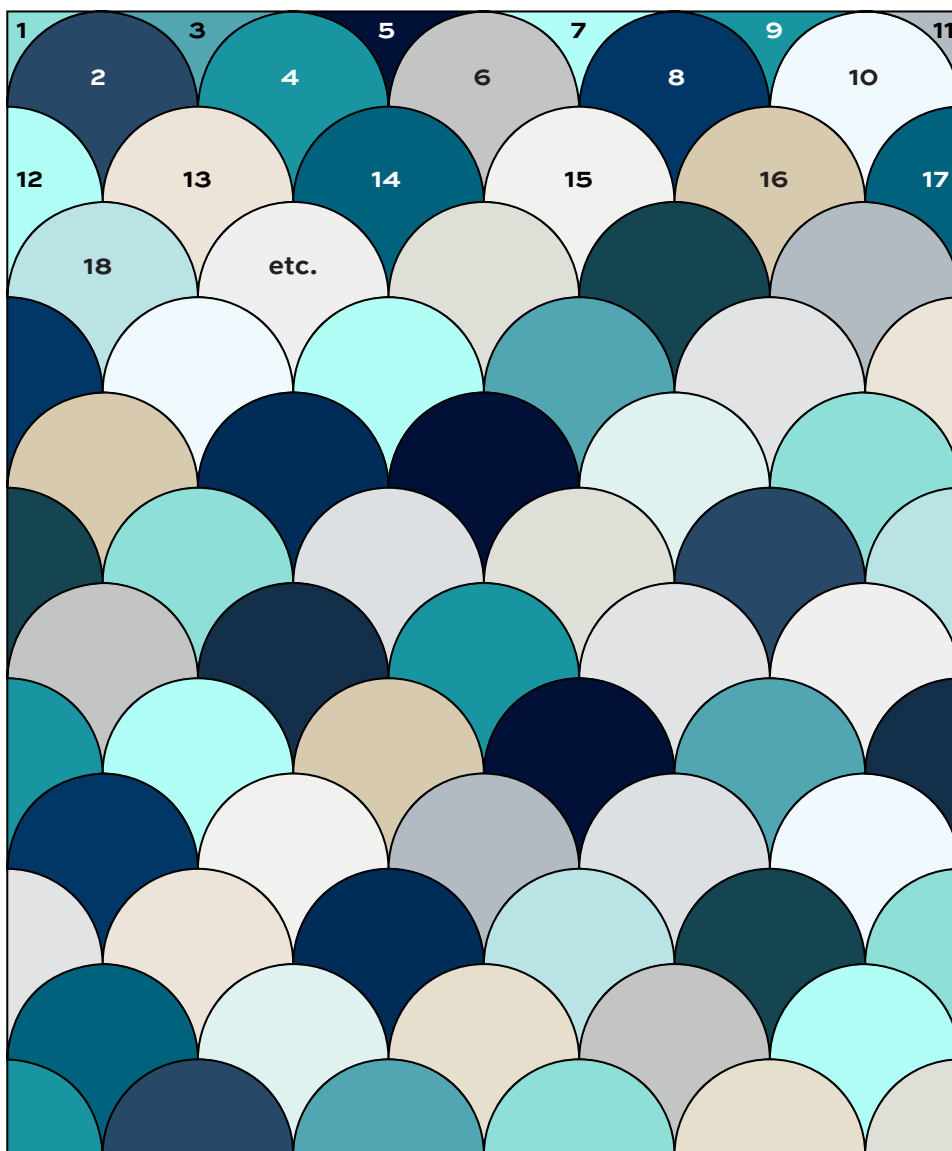
2. Position the acrylic template on the wrong side of fabric. Align the grain line of the template with the grain of the fabric to allow for maximum stretch on the curves. Draw around the template. Hint: Turn alternating templates upside down to conserve fabric. Cut out the patch on the drawn line. Cut 50 complete fabric patches.
3. Cut off the seam allowances around the acrylic template to make a finished-size clamshell template. Make a notch at the center top dot. Position this template on the wrong side of a fabric clamshell, being certain that the curved sides are 1/4" away from the raw edges of the fabric patch. Mark around the template. This is the stitching line. Mark the dot at the center top of the patch. Repeat on all 50 patches.
4. Make templates of the half and quarter patches needed to fill in the gaps at the edges of the quilt. Remember to add seam allowances all around. Or if you prefer, use whole patches at the outer edges and trim them later. Cut 22 partial patches for the outside of the quilt, or cut 22 full-size patches.
5. Clamshell patches are joined in horizontal rows. Refer to the Quilt Diagram for the stitching order. Tops of patches in a row are stitched onto the bottom of patches of the row above. The first two rows are different from the succeeding rows since patches are alternately stitched from row one, and then row two. Always sew with the concave (inside) curve on top so you can see how it is stretching to fit.

# Low Tide Quilt

6. With right sides together, position patch 1 on top of patch 2. Align and pin the beginning of the drawn line on patch 1 with the center dot of the convex curve of patch 2 underneath. Align and pin the ends of the sewing lines, and pin several places in between the beginning and ending pins. Use a single knotted thread to stitch along the drawn line, taking very small stitches. Check often that you are stitching on the line on the bottom patch. Back stitch at the end of the sewing line, and knot the thread.
7. Pick up patch 3. Stitch it to the remaining half of patch 2. Finger press the seam allowances down toward patch 2. The seam allowances from the row one patches should just butt together neatly on the back. Continue adding patches in the order on the Quilt Diagram, ending with patch 11.
8. For remaining rows, add patches in a row to the bottom of the previous row, matching each center mark with the point where two patches meet in the previous row. Press seam allowances down toward the row on bottom.
9. With an acrylic ruler, trim the patches that stick out at the sides so the quilt has straight edges. Be sure to leave a generous seam allowance all around.

## Finishing the Quilt

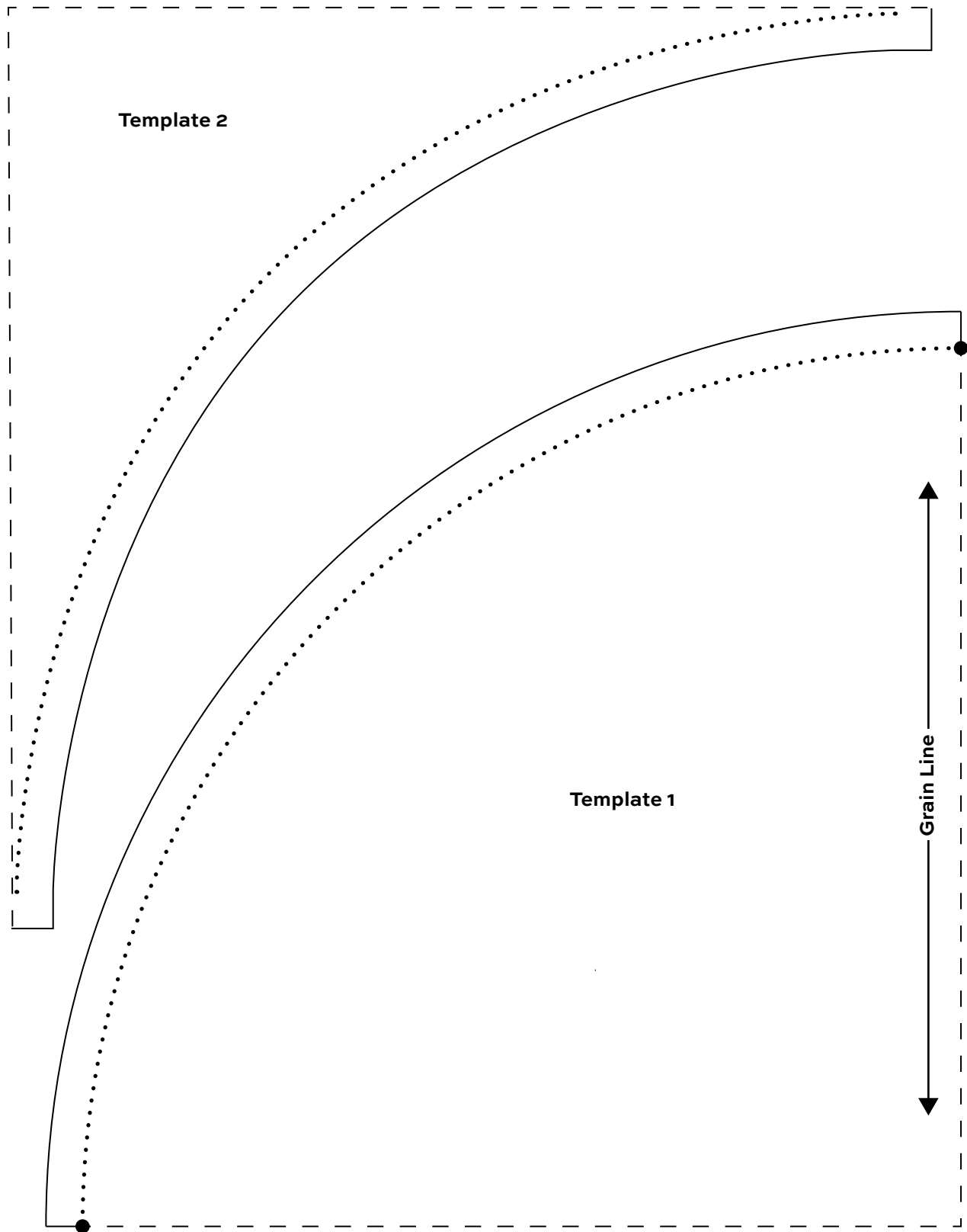
10. Layer the quilt with batting and backing and baste. Quilt around the printed motifs, or quilt an overall pattern. Bind to finish the quilt.



Quilt Diagram

# Low Tide Quilt

---





# By the Sea



## ANDOVER FABRICS



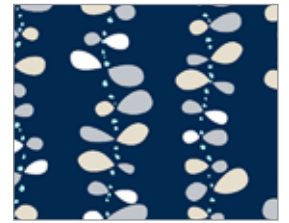
9266-B



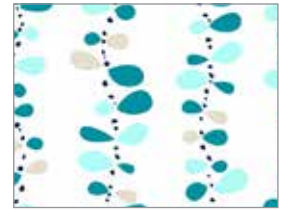
9266-L



9266-N



9269-B



9269-L



9267-B



9267-N



9267-T



9269-N



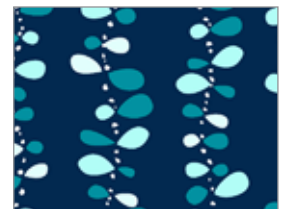
9268-L



9268-N



9268-T



9269-TB



9270-B



9270-C



9270-CN



9270-L



9270-T



9271-N



9271-T



9271-TB



9272-B



9272-C



9272-T

All fabrics are used in quilt pattern. Fabrics shown are 50% of actual size.

andover : makower uk

Free Pattern Download Available

1384 Broadway New York, NY 10018  
Tel. (800) 223-5678 • andoverfabrics.com